

The Penthouse Sky Gardens SW8



A spectacular 2828 sq ft penthouse with amazing city views on the 34th floor. Finished to a very high standard with designer furniture. Comprising reception room with floor to ceiling windows, master suite with dressing room, and spacious en-suite bathroom. Two further bedrooms with en-suite bathrooms and a study This popular development has an amazing communal roof terrace, spacious gym , 24-hour concierge, and secure parking. The property is located between Battersea Power Station and Vauxhall station and benefits from all the amenities of Nine Elms. Available now. Lambeth Council Tax Band H. Deposit required equivalent to 6 weeks rent

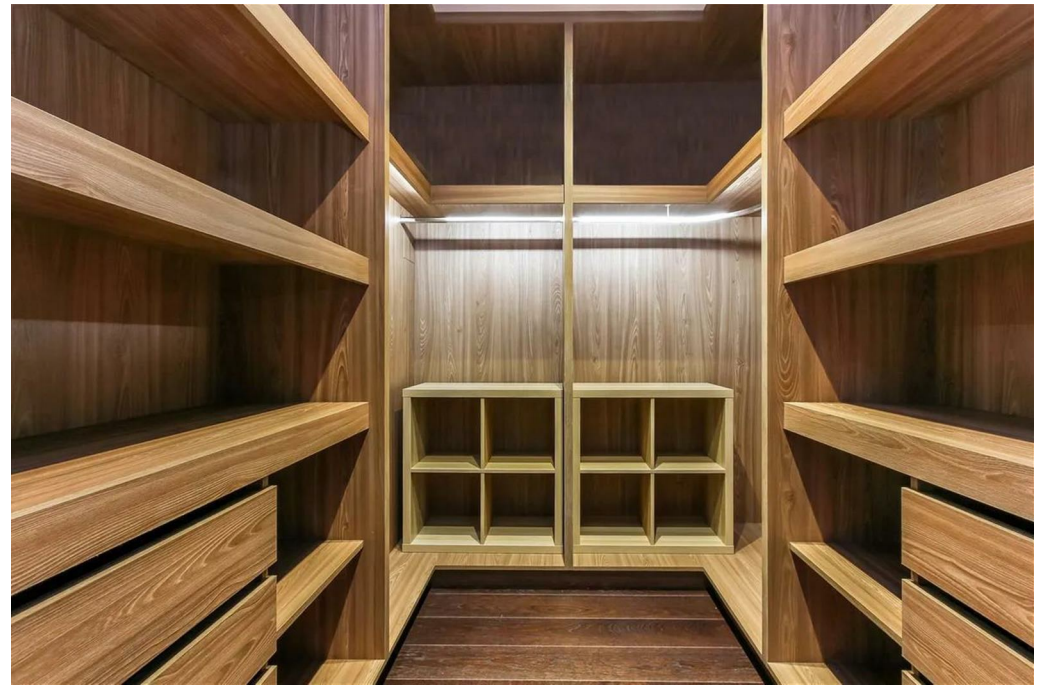
2828 Sq Ft | RECEPTION | 3 BEDROOMS| 3 BATHROOMS | STUDY | KITCHEN | PARKING | 24 HOUR CONCIERGE |
RESIDENTS GYM | COMMUNAL ROOF TERRACE

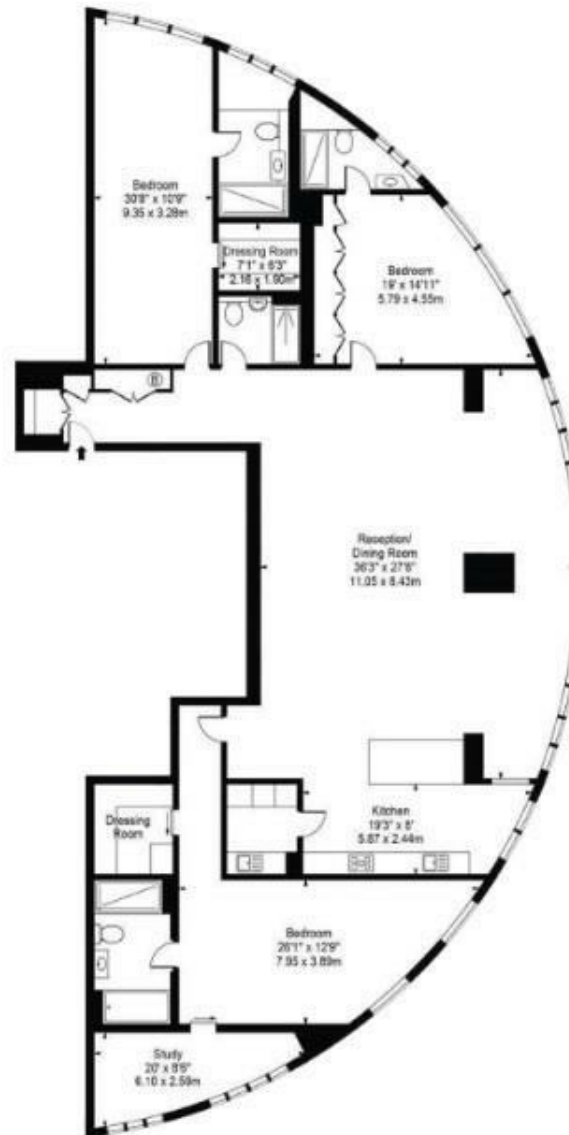


£1,962 Per Week

020 7937 9070
www.croft-international.com

Furnished





Approximate gross internal area: 2828 sq ft / 262.73 sq m

